

Loved by ancient beauties 'Gold Therapy'

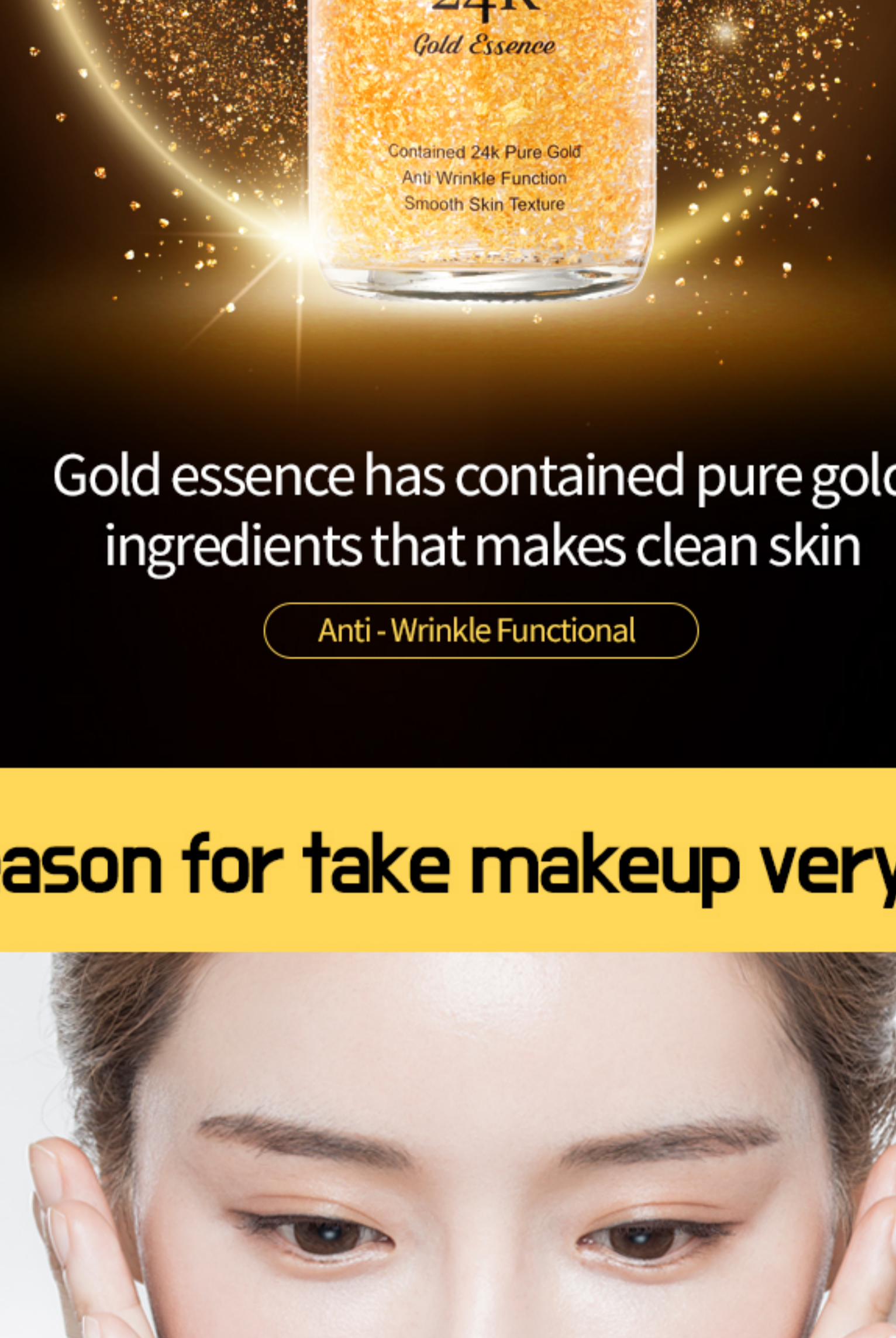
Cleopatra, Yang Guifei The secret of skin is gold!

Pure gold has been widely used as a skin care material for a long time, as it prevents aging and adds whitening effects by moisturizing and antioxidant actions.



SHO RADIANCE 24K GOLD ESSENCE

SHO RADIANCE 24K GOLD ESSENCE



Gold essence has contained pure gold ingredients that makes clean skin

Anti - Wrinkle Functional

Reason for take makeup very well



containing Silver

Radiance Skin

99.99% gold

Clean Skin

Centella asiatica Extract

Skin Calming

Moisturizing from the inside of the skin can hold on to any make-up product to prevent rolling and clinging.

99.9% pure gold CONTAINED 24K REAL GOLD

Pure gold has been widely used as a skin care material for a long time, as it prevents aging and adds whitening effects by moisturizing and antioxidant actions.



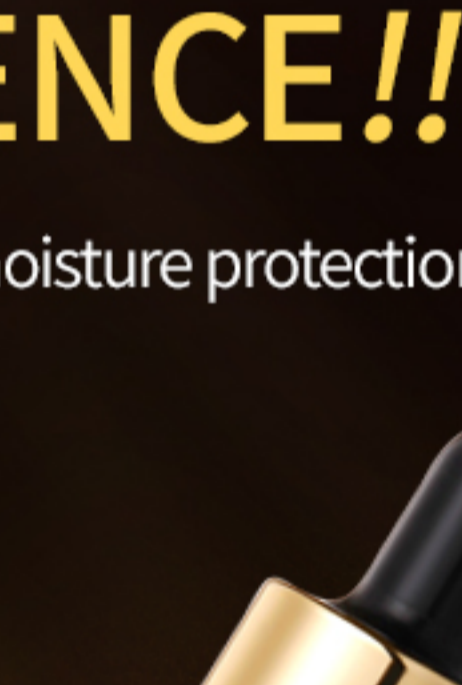
Firming and Moisturizing, Smooth skin texture

First Gold Essence makes shiny skin

It not only contained 4 plant complex extract that makes soothes sensitive skin but also has contained gold to make shiny skin



Improving the skin elasticity
Wrinkle care



Moisturizing effect
of highly waterful



Soft and smooth
skin calming



Improvement
of skin tone

Your skin gets better every day

With SHO RADIANCE 24K GOLD ESSENCE!!

It strengthens the skin barrier and forms a moisture protection to give your skin energy.

1. Gold Therapy

Gold essence make gold therapy easy at home

2. Skin Treatment

Skin waste management ensures clean skin by balancing the outside of the broken skin

3. Skin Firming improvement

It helps prevent wrinkles and keeps skin elastic and strong based on healthy skin



SHO RADIANCE 24K GOLD ESSENCE Before / After

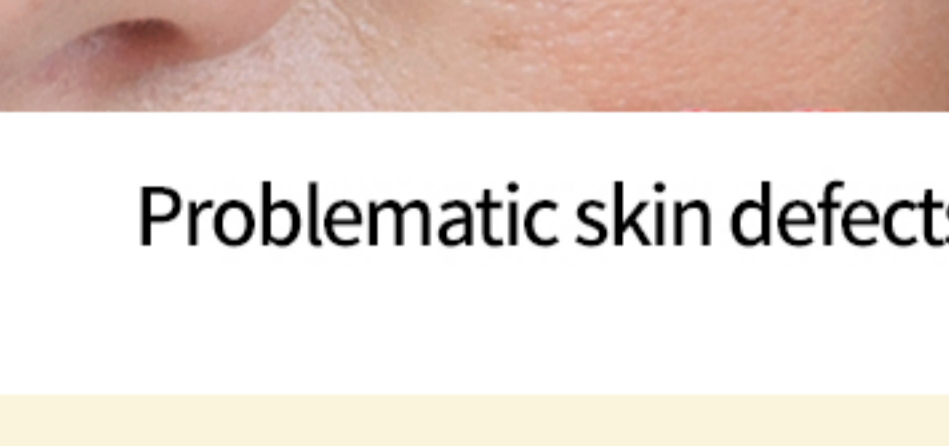


Before

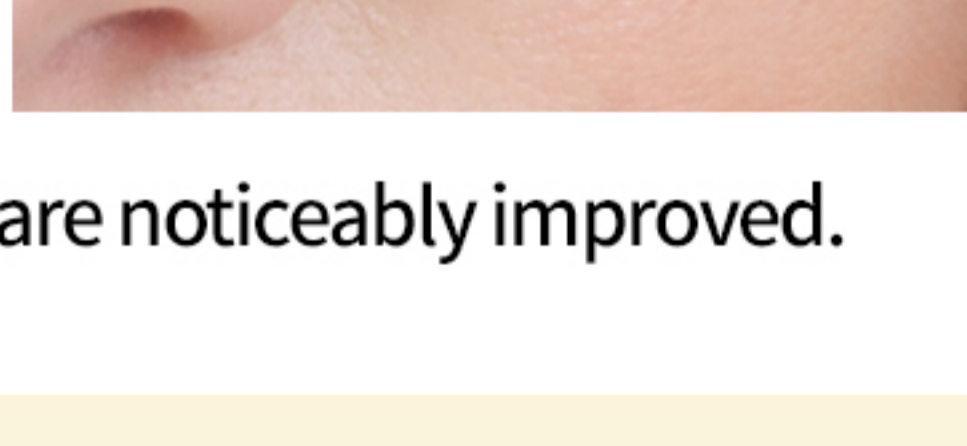


After

The rough dark skin tone has cleared

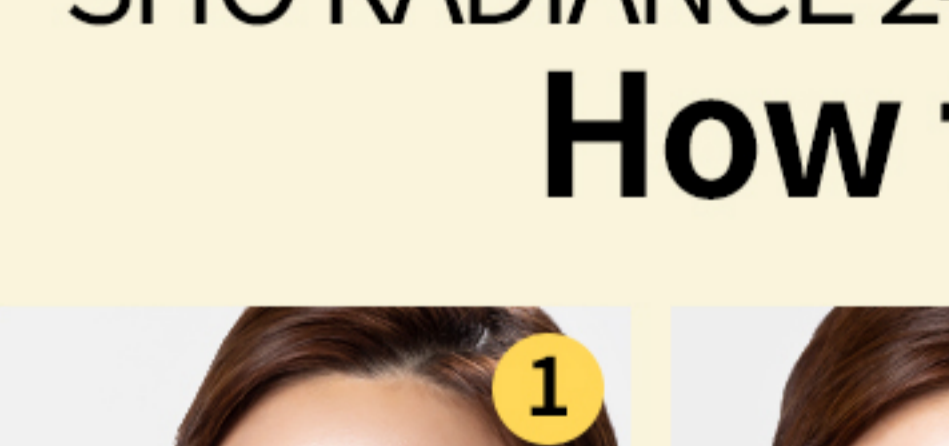


Before

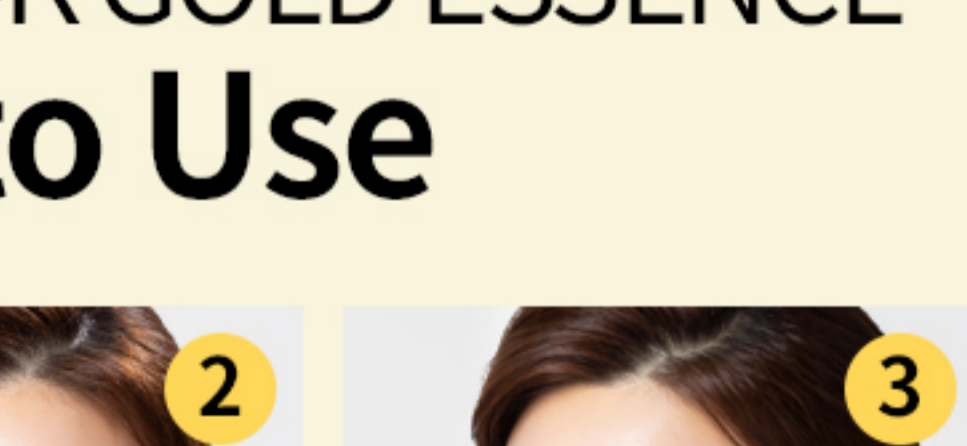


After

The dry skin moistened with moisture.



Before



After

Problematic skin defects are noticeably improved.

SHO RADIANCE 24K GOLD ESSENCE How to Use



1

After washing the face in the morning and evening, drop the essence by one or two drops onto your face.



2

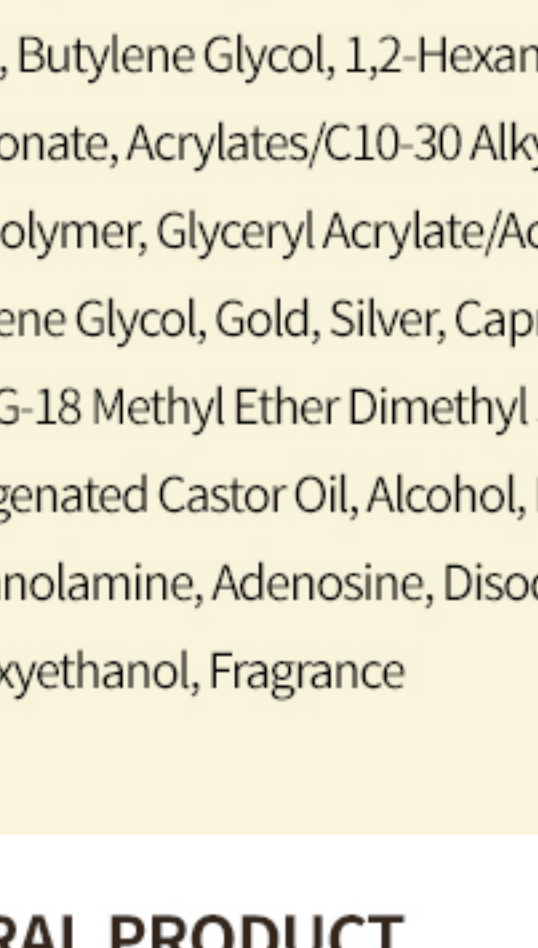
It is absorbed by tapping in circles from the center of the face to the outside in order of face, cheek, forehead, etc. after split the gold substance.



3

Massage with your palm and help absorb.

INGREDIENTS



Gold substance

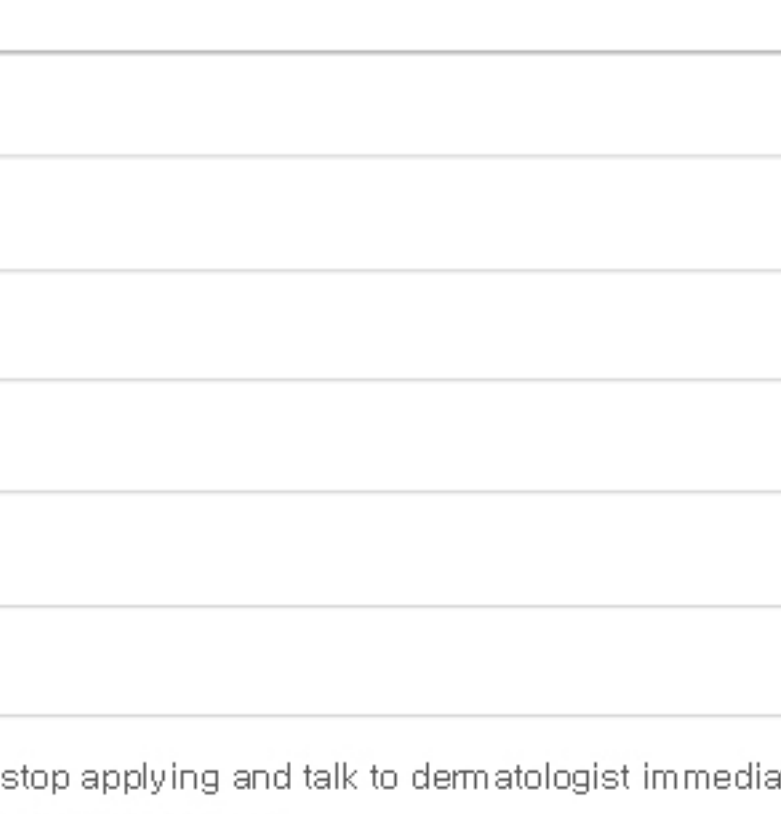
The skin's toxins are released to improve clean skin tone and create healthy skin barriers



4 plant complex extract

It helps dry skin by promoting skin calming and healthy skin production.

Water, Methylpropanediol, Glycerin, Centella Asiatica Extract, Camellia Sinensis Leaf Extract, Chamomilla Recutita (Matricaria) Extract, Aloe Barbadensis Leaf Extract, Butylene Glycol, 1,2-Hexanediol, Sodium Hyaluronate, Acrylates/C10-30 Alkyl Acrylate Crosspolymer, Glyceryl Acrylate/Acrylic Acid Copolymer, Propylene Glycol, Gold, Silver, Caprylyl Glycol, Bis-PEG-18 Methyl Ether Dimethyl Silane, PEG-60 Hydrogenated Castor Oil, Alcohol, Ethylhexylglycerin, Triethanolamine, Adenosine, Disodium EDTA, Phenoxyethanol, Fragrance



GENERAL PRODUCT

Capacity	100g
Product Specifications	All skin types
Functionality	Anti-wrinkle functional
Period of Use	1 year after opening
Manufacturer / Seller	product mark / sooin cosmetic
Manufacturing Country	Republic of Korea
Cautions	1. It is strongly recommended to stop applying and talk to dermatologist immediately if you are suffering from Rash, swell up, Itchiness. 2. Do not use the products on wounded area 3. Cautions on storage a) Away from children b) Do not leave it exposed on sunlight